

RUSH: Journal of Vascular Surgery article for proofing (# 4784)

Dear Author:

The proof of your article to be published by Elsevier in Journal of Vascular Surgery, is available as a PDF file at the following URL:

<http://rapidproof.cadmus.com/RapidProof/retrieval/index.jsp>

Login: your e-mail address

Password: 77AJrXcHZFzq

Also attached are instructions on the annotation of PDF files, as well as a Query Form if we have any questions regarding your article.

Proof corrections can now be annotated on-screen, which allows you to indicate your correction directly on the PDF proof. Annotating and returning your PDF proof as an email attachment will ensure quick and accurate publication of your article. To read these files and annotate the electronic proof with corrections you will need the latest version of Adobe Reader, which is available for free at <http://www.adobe.com/products/acrobat/readstep.html>. Please also see the accompanying instructions for further information.

If PDF annotations are not feasible, please consider one of the following methods of returning proof corrections:

- * List the corrections (including replies to any author queries) in an e-mail and return to me at a.obrien@elsevier.com or simply use the Reply button. Using this option, please refer to the line numbers on the proof.
- * Mark corrections and any other comments (including replies to any author queries) on a printout of the PDF file and fax it to Andrew O'Brien (fax #: 215-239-3388).
- * If none of the above options are possible, please express mail a marked up copy of your article to the address below.

After accessing the PDF proof, please:

- * carefully proofread the entire article, including tables, equations, figure legends, and references;
- * confirm that all references, tables, and figures match up correctly with their citations in text;
- * ensure accuracy and spelling of affiliations, addresses, and author names;
- * check that any Greek letters (such as "mu") have been translated correctly;
- * verify scientific notations, drug dosages, and manufacturer names and locations;
- * be sure permission has been procured for any reprinted materials; and
- * answer all author queries completely (these are listed on the last page).

Changes that significantly alter the content of the article, such as new figures and tables or rewritten sections, will only be considered at this stage with the Editor's approval. It is important that all of your corrections are sent back to us in one communication. Please check your proof carefully before replying, as inclusion of any subsequent corrections cannot be guaranteed and there will be no further opportunity to proofread your article.

If you submitted usable color figures with your article they will appear in color on the web, at no extra

charge. In the printed issue, color reproduction depends on journal policy and whether you agree to bear any costs. Any 'supplementary' material to your article (i.e., not appearing in print) will be accessible after your corrected article is placed online; such material is not part of the proofing process and is therefore not attached here.

PLEASE RESPOND WITHIN 48 HOURS, even if you have no corrections, and include the journal name and article number on any correspondence.


Kind regards,

Andrew O'Brien
Journal Manager, Elsevier Inc.
1600 JFK Boulevard, Suite 1800
Philadelphia, PA 19103
Tel: 215-239-3392
Fax: 215-239-3388
Email: a.obrien@elsevier.com

INSTRUCTIONS ON THE ANNOTATION OF PDF FILES

To view, print and annotate your article you will need Adobe Reader version 7 (or higher). This program is freely available for a whole series of platforms that include PC, Mac, and UNIX and can be downloaded from <http://www.adobe.com/products/acrobat/readstep2.html>. The exact system requirements are given at the Adobe site: <http://www.adobe.com/products/acrobat/acrrsystemreqs.html#70win>.

PDF ANNOTATIONS (for this you will need Adobe Reader version 7 or 8; to use version 9 see below)

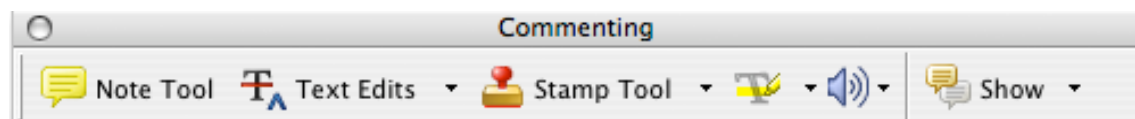
To make annotations in the PDF file, go to the main Adobe toolbar and change the cursor from a hand symbol to the normal cursor by clicking on the 'Select' button  in the menu bar at the top. When you open the PDF file using Adobe Reader, the Commenting toolbar should be displayed automatically; if not, click on 'Tools', select 'Commenting' (or 'Comment & Markup'), then click on 'Commenting toolbar' (or Show Comment & Markup toolbar in Acrobat Reader 8, or Show Commenting bar on the Mac). If these options are not available in your Adobe Reader menus then it is possible that your Adobe version is lower than version 7 or the PDF has not been prepared properly.



(PC, Adobe version 7)



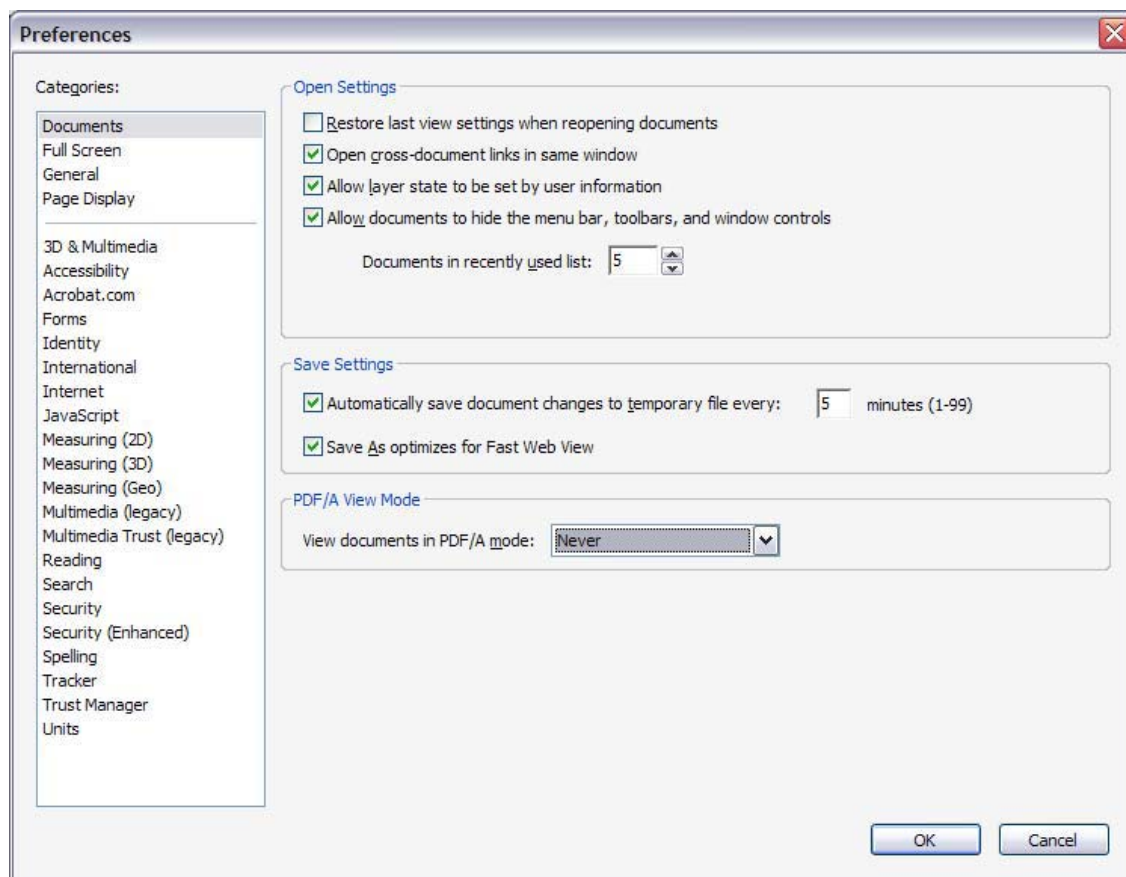
(PC, Adobe version 8, right-click on title bar (Comment & Markup) to show additional icons)



(Mac)

PDF ANNOTATIONS (Adobe Reader version 9)

The default for the Commenting toolbar is set to 'off' in version 9. To change this setting select 'Edit | Preferences', then 'Documents' (at left under 'Categories'), then select the option 'Never' for 'PDF/A View Mode' – see next page (the Commenting toolbar is the same as in version 8).



(Changing the default setting, Adobe version 9)

PLEASE DO NOT ATTEMPT TO EDIT THE ARTICLE TEXT ITSELF

TO INDICATE INSERT, REPLACE, OR REMOVE TEXT

- **Insert text**



Click the 'Text Edits' button on the Commenting toolbar. Click to set the cursor location in the text and simply start typing. The text will appear in a commenting box. You may also cut-and-paste text from another file into the commenting box. Close the box by clicking on 'x' in the top right-hand corner. It can be deleted by right clicking (for the PC, ctrl-click on the Mac) on it and selecting 'Delete'.

- **Replace text**




Click the 'Text Edits' button on the Commenting toolbar. To highlight the text to be replaced, click and drag the cursor over the text. Then simply type in the replacement text. The replacement text will appear in a commenting box. You may also cut-and-paste text from another file into this box. To replace formatted text (an equation for example) please [Attach a file](#) (see below).

- **Remove text**




Click the 'Text Edits' button on the Commenting toolbar. Click and drag over the text to be deleted. Then press the delete button on your keyboard. The text to be deleted will then be struck through.

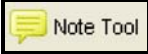
HIGHLIGHT TEXT / MAKE A COMMENT

Click on the 'Highlight' button  on the Commenting toolbar. Click and drag over the text. To make a comment, double click on the highlighted text and simply start typing.


ATTACH A FILE

Click on the 'Attach a File' button  on the Commenting toolbar. Click on the figure, table or formatted text to be replaced. A window will automatically open allowing you to attach the file. To make a comment, go to 'General' and then 'Description' in the 'Properties' window. A graphic will appear indicating the insertion of a file.

LEAVE A NOTE / COMMENT

Click on the 'Note Tool' button  on the Commenting toolbar. Click to set the location of the note on the document and simply start typing. Do not use this feature to make text edits.

REVIEW

To review your changes, click on the 'Show' button  on the Commenting toolbar. Choose 'Show Comments List'. Navigate by clicking on a correction in the list. Alternatively, double click on any mark-up to open the commenting box.

UNDO / DELETE CHANGE

To undo any changes made, use the right click button on your mouse (for PCs, Ctrl-Click for the Mac). Alternatively click on 'Edit' in the main Adobe menu and then 'Undo'. You can also delete edits using the right click (Ctrl-click on the Mac) and selecting 'Delete'.

SEND YOUR ANNOTATED PDF FILE BACK TO ELSEVIER

Save the annotations to your file and return as an e-mail attachment using the 'reply' button to the original mail. Before returning, please ensure you have answered any questions raised on the Query form and that you have inserted all corrections: later inclusion of any subsequent corrections cannot be guaranteed.

Note: Comprehensive instructions are provided within your PDF file: to access these instructions please click on the Comments and Markup menu in the main tool bar, or click on Help.

FURTHER POINTS

- Any (grey) halftones (photographs, micrographs, etc.) are best viewed on screen, for which they are optimized, and your local printer may not be able to output the greys correctly.
- If the PDF files contain colour images, and if you do have a local colour printer available, then it will be likely that you will not be able to correctly reproduce the colours on it, as local variations can occur.
- If you print the PDF file attached, and notice some 'non-standard' output, please check if the problem is also present on screen. If the correct printer driver for your printer is not installed on your PC, the printed output will be distorted.

AUTHOR QUERIES

AUTHOR PLEASE ANSWER ALL QUERIES

1

AQ1— Please confirm locations are correct.

AQ2— Please confirm that location for Micrus Endovascular is correct as added.

AQ3— Please confirm that location for Cook Inc is correct as added.

AQ4— Please confirm that location for Boston Scientific is correct as added.

AQ5— Please confirm that location for Cordis, Inc is correct as added.

AQ6— Please confirm that location for Gore Inc is correct as added.

AQ7— Please update publication information if available for ref. 11.

AQ8— Author affiliations will appear differently in the print and online versions of your paper. The PDF shows how the affiliations will present following journal style, whereas the searchable online version will present as follows in order to provide complete unabridged affiliations. Please check the accuracy of the affiliation(s) of each author and make changes as appropriate.

^aPontificia Universidad Catolica de Chile, Santiago, Chile

^bCerebrovascular Center, Cleveland, OH

^cDepartment of Cardiovascular Medicine, Cleveland, OH

^dDepartment of Vascular Surgery, Cleveland Clinic, Cleveland, OH

Glue embolus complicating endovascular treatment of a patient with Loeys-Dietz syndrome

Leopoldo Marine, MD,^a Rishi Gupta, MD,^b Heather L. Gornik, MD,^c and
 Vikram S. Kashyap MD,^d *Santiago, Chile and Cleveland, OH*

AQ: 1

A 43-year-old woman was diagnosed with Loeys-Dietz Syndrome. Five months later, the patient presented with a symptomatic 2.6 cm subclavian pseudoaneurysm. Staged endovascular treatment was initiated with left vertebral artery embolization, followed by sac ablation and stent graft exclusion. The pseudoaneurysm cavity was filled with N-butylcyanoacrylate (“glue”) via a microcatheter. Despite balloon occlusion of the pseudoaneurysm orifice, a small amount of glue debris embolized to the brachial artery, necessitating a vein bypass. In this case, distal embolization of glue may have been avoided by leaving a microcatheter in the aneurysm sac for glue injection after first deploying the stent graft. (J Vasc Surg 2010;■■■■■■■■.)

A 43-year-old woman with mild hypertension on no medications presented acutely with a right Horner’s syndrome in 2008. A right internal carotid artery (ICA) dissection was diagnosed with sequela of a right eye ptosis. Six months later, similar symptoms occurred on the left side. A magnetic resonance angiography (MRA) indicated left ICA and left subclavian artery (LSA) dissections. She was referred for evaluation and was diagnosed with Loeys-Dietz Syndrome (LDS). Her exam was relevant for a unified but hooked uvula, joint hypermobility, easy bruising, mild hypertelorism, mild pectus carinatum, and scoliosis. Genetic testing confirmed a TGFBR 2 mutation (c.1512G>C; Trp504 Cys). Imaging studies revealed ascending aortic ectasia (3.6 cm) and bilateral ICA tortuosity. The patient underwent genetic counseling, was started on atenolol and losartan, and restrictions were instituted regarding contact sports and stimulant use.

Five months following diagnosis of the left ICA and LSA dissections, the patient complained of left supraclavicular pain and a pulsing sound in her left ear. Computed tomography angiography (Fig 1) revealed a 2.6 cm proximal LSA pseudoaneurysm and a new 1.4 cm distal left ICA dilation. Both of these aneurysms were in previously dissected areas and thus were classified as pseudoaneurysms. Given the symptomatic nature of the LSA aneurysm, a staged endovascular treatment was proposed to the patient. First, carotid and vertebral angiography (Fig 2) was followed by a left vertebral temporary balloon occlusion test. The patient exhibited no new neurological findings and successfully underwent left vertebral artery embolization using platinum electrolytically-detachable coils (Micrus

Endovascular, San Jose, CA). Two days later, the patient underwent embolization and stent graft therapy of the LSA pseudoaneurysm using a combined brachial and femoral approach. A small incision was made in the arm to isolate the brachial artery for possible stent graft delivery from the arm. Aortography confirmed adequate exclusion of left vertebral artery. Coil embolization of the left internal mammary artery (micro-detachable coils, 2 mm), thyrocervical trunk branches and the aneurysm sac (12 mm Nester coils, Cook, Inc., Bloomington, IN) was performed (Fig 3). An 8 mm × 4 cm balloon angioplasty catheter (Opta, Boston Scientific, Natick, MA) was placed via the femoral approach and inflated to cover the mouth of the aneurysm during N-butylcyanoacrylate (n-BCA, “glue,” TRUFILL, Cordis Inc., Bridgewater, NJ) embolization. The glue was diluted 1:1 and instilled via a coaxial 3 Fr microcatheter within a 5 Fr glide catheter from a brachial approach. A total of 1.5 mL was instilled. During deflation of the angioplasty balloon, a small amount of glue debris was noticed going down the subclavian artery to the brachial artery. Immediately, the brachial artery was clamped with sheath removal. Following this, a long 12 Fr sheath was promptly placed via the femoral approach, and a 10 mm × 5 cm stent graft (Viabahn, Gore Inc., Flagstaff, AZ) was deployed excluding the LSA pseudoaneurysm (Fig 4), with no evidence of antegrade flow into the aneurysm or endoleak from LSA branches. After a failed attempt of glue debris removal using Fogarty thrombo-embolectomy balloons (Fig 5), a brachial-to-brachial reversed vein bypass was successfully performed. The patient was discharged on postoperative day 5, asymptomatic with a palpable left radial pulse. At 1 year follow up, she is doing well without evidence of subclavian aneurysm recurrence. Her left ICA pseudoaneurysm is stable and is being followed.

DISCUSSION

LDS is a recently characterized connective tissue disorder associated with mutations of transforming growth factor (TGF)-beta receptors I and II, and is inherited in an autosomal dominant pattern.¹ In this case, the patient presented with bilateral ICA and LSA dissections, with the

From Pontificia Universidad Catolica de Chile,^a and the Cerebrovascular Center,^b the Department of Cardiovascular Medicine,^c and the Department of Vascular Surgery,^d Cleveland Clinic.

Competition of interest: none.

Reprint requests: Vikram S. Kashyap, MD, Cleveland Clinic, Department of Vascular Surgery, H32, 9500 Euclid Ave., Cleveland, OH 44195 (e-mail: kashyav@ccf.org). 0741-5214/\$36.00

Copyright © 2010 Published by Elsevier Inc. on behalf of the Society for Vascular Surgery.

doi:10.1016/j.jvs.2010.05.104



Fig 1. Computed tomography angiography reveals a new 2.6 cm proximal LSA pseudoaneurysm (short arrow) and a new 1.4 cm distal left ICA dilation at the bottom of a complete coil (long arrow) in a patient with LDS.

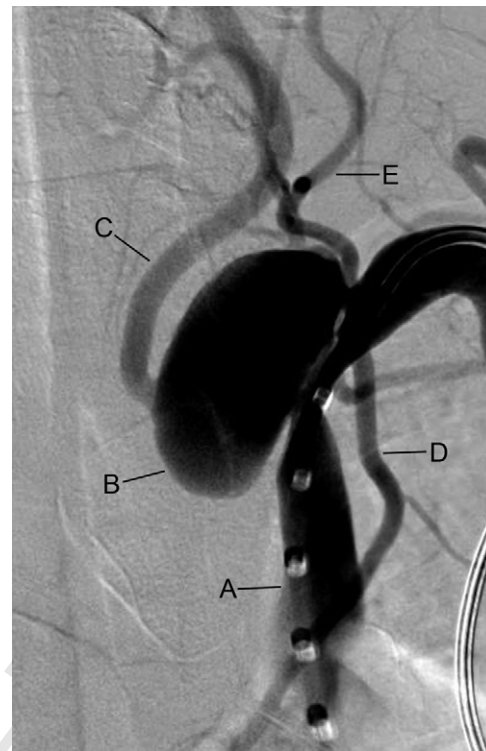


Fig 2. Marker catheter angiography via the left subclavian artery (A) documents a large pseudoaneurysm (B) with the vertebral (C), internal mammary arteries (D), and thyrocervical trunk (E) in close proximity.

left ICA and LSA degenerating into pseudoaneurysms. Traumatic lesions secondary to venous access attempts are the main cause of subclavian artery pseudoaneurysms, occurring in 0.1% to 0.4% of central venous punctures.² Isolated true aneurysms of the subclavian artery are among the rarest of all peripheral aneurysms. Atherosclerotic degeneration is the most common etiology for true aneurysms; non-atherosclerotic subclavian aneurysms are even more rare,³ and usually due to connective tissue disorders (eg, Marfan's syndrome, Ehlers-Danlos syndrome, LDS), vasculitis (eg, giant cell arteritis, Takayasu's arteritis), or arterial thoracic outlet syndrome.

LDS has a wide spectrum of phenotypic presentations including cardiovascular, skeletal, and craniofacial abnormalities.¹ Skeletal features may include long fingers, pectus abnormalities, scoliosis, cervical instability, and joint laxity. Craniofacial findings may include wide-spaced eyes, cleft palate, bifid or wide uvula, and early fusion of skull bones (craniosynostosis). Cardiovascular findings may include aortic and other aneurysms, dissections, tortuous vessels, and congenital heart defects. These abnormalities may be clinically asymptomatic. Alternatively, patients may present acutely with chest pain, compressive symptoms (dysphagia, neuropathy), hemoptysis, ischemia, or aneurysm complications. Severe cardiovascular abnormalities can be found even at an early age.^{4,5} Median survival is 37 years; the main cause of death being dissection of the thoracic aorta (67%),

dissection of the abdominal aorta (22%), and intracranial bleeding (7%).⁶

Abdominal aortic aneurysmal disease in LDS has been identified in 10% of the cases and branch vessel disease in 7% (superior mesenteric, iliac, femoral run-off arteries, etc). There is a 33% to 47% risk of multiple location aneurysms.⁷⁻⁹ Arterial aneurysms in LDS are more aggressive than in other connective disorders, with more frequent complications (dissection, rupture)^{1,6} in patients at younger ages and at smaller diameters.¹⁰ Therefore, complete imaging of the aorta and its branches should be done usually with computed tomography angiography or MRA. Imaging of the cerebrovasculature, including the intracranial vessels, is recommended. Recently published multi-specialty consensus guidelines have recommended yearly cerebrovascular to pelvis MRA imaging for patients with LDS.¹¹ Surgical repair should be considered in symptomatic patients or in cases of rapid aneurysm expansion. Prophylactic repair may be considered in aneurysms at smaller diameters than traditional aneurysms because of the aggressive natural history of aneurysmal disease in LDS.¹¹ Open operative repair often requires extensive incisions and dissection to get to large aneurysms. In this case, we believed the patient had a LSA pseudoaneurysm since recent previous imaging had shown a dissection flap, and the artery expanded rapidly. Most reports on LDS indicate aneurysm,

63
64
65
66
67
68
69
70
71
72
73
74
75
76
77
78
79
80
81
82
83
84
85
86
87
88
89
90
91
92
93
94
95
96
97
98
99
100
101
102
103
104
105
106
107
108
109
110
111
112
113
114
115
116
117
118
119
120

63
64
65
66
67
68
69
70
71
72
73
74
75
76
77
78
79
80
81
82
83
84
85
86
87
88
89
90
91
92
93
94
95
96
97
98
99
100
101
102
103
104
105
106
107
108
109
110
111
112
113
114
115
116
117
118
119
120



Fig 3. Embolization and stent-graft therapy of the LSA pseudoaneurysm using a combined brachial and femoral approach. Multiple coils have been already placed into the vertebral artery in this staged procedure. The brachial glide catheter (left) is used to select a thyrocervical branch for embolization. The femoral angled catheter (bottom) allows contrast injections and eventual guidewire and stent graft placement.

rather than pseudoaneurysm morphology, but pseudoaneurysms may be underappreciated. In our case, we considered other operative options. Sternotomy or thoracotomy and a supraclavicular incision would have been required for proximal, distal, and control of arterial branches. Alternatively, control of the arterial inflow may have been accomplished using a balloon catheter or arterial plug device. Resection of the pseudoaneurysm coupled with restoration of continuity of flow through a graft interposition or a subclavian-to-carotid artery transposition were entertained. Given the rapidity of pseudoaneurysm growth, we were concerned about the fragility of the subclavian artery and opted for endoluminal ablation and stent grafting. In retrospect, the lack of fragility in the brachial vessels may indicate that either our concerns were unwarranted, or that arterial regions are variably affected by LDS.

Endovascular treatment is a minimally invasive alternative in patients with favorable anatomy with adequate attachment areas for stents. It consists of exclusion of dilated area with a covered stent.^{12,13} First reported by MacSweeney in 1996,¹⁴ new generations of endografts are smaller and more flexible. In this particular patient with LDS, extensive, staged embolization of proximal left subclavian branches was required to insure pseudoaneurysm enlargement and/or rupture secondary to a type II endoleak. This was done with coil embolization of the vertebral, internal



Fig 4. Completion imaging after stent graft deployment showing an excluded LSA pseudoaneurysm with no evidence of antegrade flow into the aneurysm, or endoleak from LSA branches. The coil and glue mass in the LSA pseudoaneurysm is seen.

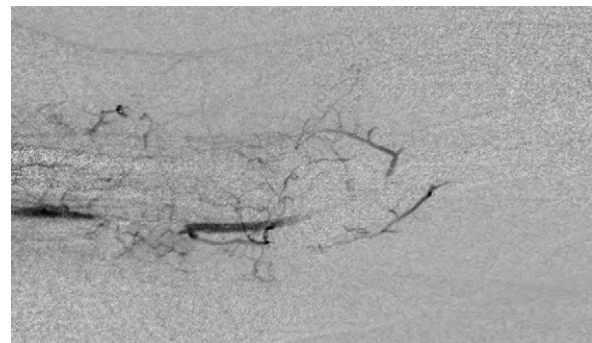


Fig 5. Glue embolus to the mid brachial artery complicating this endovascular case. Late images (not shown) revealed a patent distal brachial artery allowing a brachial to brachial reversed vein bypass.

mammary, and thyrocervical trunk arteries. In concordance with our experience treating visceral artery aneurysms,¹⁵ catheter-directed n-butyl cyanoacrylate sac embolization was done for complete ablation of the pseudoaneurysm sac and any remnant small branches. The unexpected distal migration of part of this glue and the further need of bypass surgery could have been avoided if this catheter-directed sac injection had been done after the Viabahn deployment. This technical tip could have been accomplished by leaving

121
122
123
124
125
126
127
128
129
130
131
132
133
134
135
136
137
138
139
140
141
142
143
144
145
146
147
148
149
150
151
152
153
154
155
156
157
158
159
160
161
162
163
164
165
166
167
168
169
170
171
172
173
174
175
176
177
178

a microcatheter in the pseudoaneurysm sac via a brachial approach as the stent graft was deployed from the femoral approach. The n-butyl cyanoacrylate could then be injected at an appropriate dilution and rate to allow complete ablation of the sac with subsequent microcatheter removal.

This patient will need rigorous surveillance to follow the treated LSA pseudoaneurysm and the currently small ICA pseudoaneurysm. All patients with LDS need tightly controlled blood pressure, typically with beta blockade and/or angiotensin receptor blockade, activity restrictions, and surveillance imaging to identify new aneurysms or complications related to this virulent disease process. Genetic counseling and screening of selected family members is also recommended.

AUTHOR CONTRIBUTIONS

- Conception and design: LM, VK
- Analysis and interpretation: RG, HG
- Data collection: LM
- Writing the article: LM, VK
- Critical revision of the article: RG, HG, VK
- Final approval of the article: LM, RG, HG, VK
- Statistical analysis: N/A
- Obtained funding: N/A
- Overall responsibility: VK

REFERENCES

1. Loeys BL, Chen J, Neptune ER, Judge DP, Podowski M, Holm T, Meyers J, et al. A syndrome of altered cardiovascular, craniofacial, neurocognitive and skeletal development caused by mutations in TGFBR1 or TGFBR2. *Nat Genet* 2005;37:275-81.
2. Bernik TR, Friedman SG, Scher LA, Safa T. Pseudoaneurysm of the subclavian-vertebral artery junction—case report and review of the literature. *Vasc Endovascular Surg* 2002;36:461-4.
3. Halldorsson A, Ramsey J, Gallagher C, Meyerrose G. Proximal left subclavian artery aneurysms: a case report and review of the literature. *Angiology* 2007;58:367-71.

4. Choo JT, Tan TH, Lai AH, Wong KY. Loeys-Dietz syndrome: a Marfan-like syndrome associated with aggressive vasculopathy. *Singapore Med J* 2009;50:e353-7.
5. Malhotra A, Westesson PL. Loeys-Dietz syndrome. *Pediatr Radiol* 2009;39:1015.
6. Loeys BL, Schwarze U, Holm T, Callewaert BL, Thomas GH, Pannu H, De Backer JF, et al. Aneurysm syndromes caused by mutations in the TGF-beta receptor. *N Engl J Med* 2006;355:788-98.
7. Dougherty MJ, Calligaro KD, Savarese RP, DeLaurentis DA. Atherosclerotic aneurysm of the intrathoracic subclavian artery: a case report and review of the literature. *J Vasc Surg* 1995;21:521-9.
8. McCollum CH, Da Gama AD, Noon GP, DeBakey ME. Aneurysm of the subclavian artery. *J Cardiovasc Surg (Torino)* 1979;20:159-64.
9. Pairolero PC, Walls JT, Payne WS, Hollier LH, Fairbairn JF 2nd. Subclavian-axillary artery aneurysms. *Surgery* 1981;90:757-63.
10. Williams JA, Loeys BL, Nwakanma LU, Dietz HC, Spevak PJ, Patel ND, François K, et al. Early surgical experience with Loeys-Dietz: a new syndrome of aggressive thoracic aortic aneurysm disease. *Ann Thorac Surg* 2007;83:S757-63.
11. Hiratzka LF, Bakris GL, Beckman JA, Bersin RM, Carr VF, Casey DE Jr, et al. 2010 ACCF/AHA/AATS/ACR/ASA/SCA/SCAI/SIR/STS/SVM Guidelines for the Diagnosis and Management of Patients With Thoracic Aortic Disease: Executive Summary. A Report of the American College of Cardiology Foundation/American Heart Association Task Force on Practice Guidelines, American Association for Thoracic Surgery, American College of Radiology, American Stroke Association, Society of Cardiovascular Anesthesiologists, Society for Cardiovascular Angiography and Interventions, Society of Interventional Radiology, Society of Thoracic Surgeons, and Society for Vascular Medicine. *Circulation*. 2010 Mar 16. [Epub ahead of print].
12. Sivamurthy N, Eichler C, Schneider DB. Endovascular exclusion of subclavian artery pseudoaneurysm. *Vascular* 2006;14:231-5.
13. Hernandez JA, Pershad A, Laufer N. Subclavian artery pseudoaneurysm successful exclusion with a covered self-expanding stent. *J Invasive Cardiol* 2002;14:278-9.
14. MacSweeney ST, Holden A, Hartley D, Lawrence-Brown M. Endovascular repair of subclavian artery aneurysm. *J Vasc Surg* 1996;24:304-5.
15. Tulsyan N, Kashyap VS, Greenberg RK, Sarac TP, Clair DG, Pierce G, Ouriel K. The Endovascular management of visceral artery aneurysms and pseudoaneurysms. *J Vasc Surg* 2007;45:276-83.

Submitted Apr 6, 2010; accepted May 27, 2010.

AQ: 7